

#SUMMER2026

INFORMATION PACKAGE



IMPACT PROGRAM

FRENCH AS A SECOND LANGUAGE
SUMMER CAMP

JUNE 28 – JULY 24



UNIVERSITÉ DE MONCTON
EDMUNDSTON MONCTON SHIPPAGAN

Formation continue

Dear parents and students:

We, at the **Université de Moncton** are pleased to welcome you as a student in our 2026 Summer French Program for grades 9 and 10 named **IMPACT**. We are happy that you have chosen to spend four weeks of immersion in the French language and culture at our institution. We sincerely hope that your stay with us will be a memorable experience. Our staff is committed to making your immersion experience fun and rewarding.

The main objective of our program is to place the students in a Francophone environment, thus offering them an excellent opportunity to expand their knowledge of both the French language and culture. **The French only rule is the most important rule of the program. Although this is especially difficult for novice students, our staff will do its best to help you.** Students will be placed in different levels according to their proficiency as reflected by the results of the placement test which participants will be able to do before their arrival on the campus.

We try to keep our classes small and homogeneous. The methods used by our teaching staff are “communicative”, “functional” and “experiential” in nature. We offer many opportunities for students to practise and improve their oral proficiency skills in the target language. All necessary books and material will be provided as needed. Our teachers are professionals who are experienced in creating a positive learning atmosphere and ensuring that learning French is a stimulating and interesting experience for everyone. There will be many oral exercises, debates, discussions and educational activities.

Classroom activities are enhanced by various cultural, pedagogical and social activities. A communicative approach is used instead of more traditional structural methods. Such an approach promotes the integration of all four basic language skills (listening, speaking, reading and writing). This approach is also used outside the classroom.

Staff and Monitors

The monitors who will be working with you are chosen because of their expertise as well as their outstanding qualities as communicators and facilitators. They are all experienced post-secondary students with a keen interest in working with people learning a second language. During the academic year, most of them are involved in extra-academic activities on the campus, e.g., sports, campus radio, student government, coaching, etc. They are all highly skilled and you can be assured that their activities will be well planned and executed. All activities are geared towards the reinforcement, practice and discovery of French as the target language.

Our councilors and teaching staff are well experienced, dedicated, conscientious, and dynamic. We are all here to make the students' stay at the Université de Moncton an enjoyable and memorable experience.

We encourage you to read this information package completely. In the event that you need more information, you may send an email to impact@umoncton.ca.

In May, you will be invited to participate in a virtual information session. At the end of this session, there will be a question/answer time.

We look forward to meeting you on registration day!

Best regards,

Lynne M. LeBlanc

Interim Executive Director
Formation Continue
Université de Moncton

Laetitia Augustine

Languages and Culture Manager
Formation Continue
Université de Moncton

Nina Richard

Languages and Culture Project
Coordinator
Formation Continue
Université de Moncton

Position currently being filled

Impact Program Director
French Immersion Summer Program
Formation Education
Université de Moncton

Table of contents

ARRIVAL AND DEPARTURE	4
REGISTRATION DAY	4
DEPARTURE	4
WHAT WILL MY DAYS LOOK LIKE?	6
WORKSHOPS, OUTINGS AND ACTIVITIES	7
EXCURSIONS	7
WHAT SHOULD I BRING?	8
Essential items	8
Optional items	9
LAUNDRY	7
SPORTS FACILITIES	7
MEALS	7
PLACEMENT TEST AND COURSE LEVELS	7
TEACHING APPROACH AND MATERIALS	8
ATTENDANCE POLICY	8
STAFF	9
SPECIAL NEEDS	9
GENERAL RULES AND REGULATIONS	9
RESIDENCE RULES	11
RULES FOR SUNDAYS	12
THE FRENCH ONLY RULE	13
PACKAGE DELIVERY PROCESS	13
RESPECTFUL AND INCLUSIVE ENVIRONMENT	13
FAQ – FREQUENTLY ASKED QUESTIONS	15
STAFF AND CONTACT INFORMATION	16
Appendix A	17
Appendix B	18

ARRIVAL AND DEPARTURE

REGISTRATION DAY

DATE: Sunday, June 28, 2026

LOCATION: Richelieu Room, the Pavillon Léopold-Taillon, main floor, 18 av. Antonine Maillet (see appendix A).

TIME: **10:00 a.m. to 4:00 p.m.** If you arrive on campus after 4:00 p.m., you will need to pick up your room key at the security office located in Room 001 of Résidence Lefebvre, at 15 Sainte-Croix Street (the entrance is just behind Résidence Lefebvre). Members of the team will come to meet you at that location.

During your registration, you will have the opportunity to meet the program staff, who will answer any questions you may have. You will also receive an identification card that you must keep with you at all times. This card identifies you as a student in the Impact French immersion program and allows you access to campus facilities.

NOTE: Travel to and from the University de Moncton Campus is the family's responsibility. It is important to make prior arrangements with the Department of Education and Early Childhood Development if your child cannot arrive on the registration day. Otherwise, their place will be forfeited.

SCHEDULE— First Day (Sunday, June 28, 2026)

- 🚲 Registration from 10:00 am to 4:00 pm*
- 🚲 Unpacking
- 🚲 Supper at the cafeteria at 5:00 pm
- 🚲 Student gathering in front of the residence at 6:45 pm
- 🚲 Information meeting with staff at 7:00 pm

SCHEDULE— Second Day (Monday, June 29, 2026)

- 🚲 Morning 8:30 a.m.: Placement test (oral)
- 🚲 Afternoon: Orientation and ice-breaking activities.

DEPARTURE

Date: Friday, July 24. Students are asked to leave before 11:00 a.m. on that day. Rooms must be emptied by 9:00 a.m. A storage room will be available to secure your child's belongings until their drive arrives.

WHAT WILL MY DAYS LOOK LIKE?

TYPICAL DAILY SCHEDULE

MONDAY TO FRIDAY

7:30 am to 8:15 am	Breakfast
8:30 am to 10:00 am	Classroom time
10:00 am to 10:15 am	Break
10:15 am to 11:15 am	Classroom time
11:15 am to 12:30 pm	Dinner
12:30 pm to 2:00 pm	Classroom time
2:00 pm to 4:30 pm	Workshops, cultural and athletic activities
4:30 pm to 5:00 pm	Free time (on campus)
5:00 pm to 6:00 pm	Supper
7:00 pm to 9:00 pm	Workshops, cultural and athletic activities
10:00 pm	Curfew

SATURDAYS

On Saturdays, excursions will be organized at various attractions in the Moncton area.

SUNDAYS

Sundays are free days with a more relax supervision. There are no organized activities during the day. The students have to be back on campus at 6:45 p.m., the latest, since there is a general meeting at 7 p.m.

Please note that the schedule is subject to change without notice. If this occurs, a revised schedule will be provided to participants.

WORKSHOPS, OUTINGS AND ACTIVITIES

There will be activities and outings in the afternoon, in the evening, and on Saturdays, such as excursions, cultural visits, beach trips, and more. Activities are still to be confirmed, but here are a few that are very popular: Parlee Beach, the Acadian tourist attraction Akadi Lumina, and a visit to the Hopewell Rocks tourist site.

Mandatory workshops or activities led by teaching staff as well as facilitators are also scheduled in the afternoon. These workshops will focus on themes such as Acadia, francophone music, the environment, sports, crafts, and many others.

We will also organize special evenings, social gatherings, game nights, sports activities, a gala, performances, and other enriching and interactive activities, all of which are mandatory. Please note that these activities, workshops, and outings are required and provide excellent opportunities to strengthen your French learning outside the classroom. These activities are an integral part of the scholarship you have accepted.

EXCURSIONS

- 🚲 We go out on excursions at least twice a week, usually on Wednesday afternoons and Saturdays (weather permitting).
- 🚲 One weekly visit to the local mall is scheduled in order to allow students to buy toiletries and other personal items. A few supervised trips to the local corner store, depending on the needs of the students.
- 🚲 Use of C.E.P.S. (university athletic facilities) when available.
- 🚲 Special emphasis will be placed on visiting cultural and/or historical sites. For example, our tentative schedule includes trips to attractions such as Tree Go, Hopewell Rocks, Place Resurgo, Fundy National Park, the Acadian Museum, as well as a fun-filled cultural day.

WHAT SHOULD I BRING?

Please note that the following are provided:

- 🚲 Bedding and blankets
- 🚲 Towels (1) and face cloths (1)
- 🚲 Residences are equipped with washers and dryers and may be used at a cost (more details later).

Essential items

- Copy of "Medicare" card with an expiration date or any other insurance cards is required. (Proof of Medical Insurance if you are a non-resident.)
- Bathing caps are mandatory in the university pool. The program does not pay for bathing caps.
- At least one large beach towel
- Sunscreen and other sun protection
- Sneakers or other type of comfortable and practical outdoor footwear (running and/or walking shoes for various activities).
- Comfortable summer clothing/outdoor clothing/warm clothing in case the weather changes. Please dress appropriately.
- Hair dryer, shaver and other small personal appliances.
- Soap, shampoo, toothbrush and toothpaste.
- Alarm clock.
- Laundry detergent.
- microwaveable bowl, cup and plate if needed (reminder : breakfast, lunch and supper are included).
- Pen, pencils, sharpener and two notebook. Textbooks and exercise books are provided as needed.
- A French-English dictionary (recommended - You may buy one at Librairie Acadienne located on campus).
- Bescherelle - l'Art de conjuguer (recommended).
- Pocket money and credit/debit card for snacks and personal expenses. We recommend having a backup solution in case of loss.
- Medication (Nonprescription medication ie: Tylenol, Claritin Allergies or prescription medication).
- Flashlight.

Optional items

- A small fan for your child's room/icepack. (there is no air-conditioning in the residences and it gets hot in the Summer!)
- Portable musical instruments such as a flute, clarinet, guitar, etc. (A band may be formed if there are enough instrument players. Musicians are usually asked to perform during the Gala at the end of the program.)
- Appropriate clothing for the banquet at the end of the program
- Sports equipment such as a baseball glove, football, skates, tennis or badminton racquet, etc. Some of these items may be rented at the sports complex (CEPS) for use during leisure time.
- Rain wear: Raincoat and rain shoes ("duckies")
- Small backpack for day trips
- Reusable water bottle
- Insect repellent

You may bring an electronic tablet (iPad, Kobo, etc.), a cell phone, or a laptop; however, their use is prohibited during class hours, organized activities, and workshops.

Please note that there are exceptions to this rule, provided that their use is related to the activity taking place and that the supervising adult agrees (for example, you may use the photo application on your mobile phone instead of bringing a camera).

Laptop computers and wireless access

Feel free to bring your laptop computer with you. WI-FI service (wireless access) is available free of charge everywhere on campus ;

- through a secure connection using the UMoncton account and email address created for you prior to your arrival; or
- through the visitor Wi-Fi network (umcm-visiteur).

Wi-Fi will also be available in your residence via a modem. Connection instructions will be provided.

However, please take note of the following:

- The Université de Moncton is not responsible for damage caused to the personal property of its tenants. Accordingly, it is strongly recommended that students acquire insurance coverage for their personal belongings.
- The Université de Moncton is not responsible for lost or stolen personal belongings. Your door must be kept locked at all times.

IMPORTANT

- 🚫 No installed air conditioners are allowed.
- 🚫 The use of a cellular phone is not permitted to be used during classes, workshops and activities (you may use it as a camera during activities).
- 🚫 Music players and headphones are not permitted during instructional time.

NOTE: Feel free to bring whatever you need, but keep in mind that the camp only lasts four weeks and that you have access to laundry facilities. The Université de Moncton is not responsible for the loss or theft of personal belongings. Therefore, it is imperative that you look after your personal effects, and that you keep your door always locked. **We recommend that you label your personal items, camera and cell phone.**

LAUNDRY

You may bring all the personal items you may need; however, keep in mind that the program lasts only four weeks and that laundry facilities are available on site.

- **Bedding:** Sheets, blankets, and pillows are provided by Housing Services.
- **Laundry facilities:** The residences are equipped with washing machines and dryers. The cost is \$2 per use for each machine.
- **Laundry card:** You will receive a laundry card on the first day of the program. You can reload it at the Student Center ([see Appendix A](#)).
- **Coinomatic app:** You may also download the Coinomatic app on your phone ([see Appendix B](#)) to add funds remotely. To register, you must be in the laundry room. Simply scan the QR code on the machine, and the amount will be charged directly to the app.
- **Tip:** Using the app allows you to add funds without having to go to the Student Center. See Appendix B.

SPORTS FACILITIES

The Université de Moncton campus offers a variety of sports facilities. For more details, please visit [CEPS Louis-J.-Robichaud](#).

Important:

Access to the CEPS facilities is subject to a fee, payable by the participant. The facilities may be used at your own risk and only during your free time, as no supervision will be provided by our staff.

MEALS

You will be entitled to three meals per day: breakfast, lunch, and dinner. Meals will be served at the campus restaurant, **Le Bistro 63**, located in the Student Center. Each day, you will find a wide variety of healthy and balanced options. During outings, boxed lunches will be prepared by the campus dining staff and sent with the group.

Important: You will be asked to indicate any allergies or dietary restrictions when completing your registration form. We will then forward this information to Food Services.

Program staff will provide you with more information about cafeteria menus, a list of restaurants within walking distance of campus, and nearby grocery stores.

PLACEMENT TEST AND COURSE LEVELS

The placement test will be administered on our online platform. You will receive an email with information on how to create your account. This account will allow you to complete the test online and access several useful resources for your French learning.

Important: The placement test must be completed before your arrival on campus. The oral component of the test will take place on campus with our teaching team on the first day of the program. Based on the results, you will be placed in a group corresponding to your level of language proficiency. We do our best to keep groups as homogeneous as possible.

Our four levels follow the **Common European Framework of Reference for Languages (CEFR)**:

- Beginner (A1)
- Elementary (A2)
- Intermediate (B1)
- Advanced (B2)

Our courses are aligned with CEFR standards and cover the main language skills for each level. To make the most of the program, you will be required to complete the assigned work and study in addition to class time.

TEACHING APPROACH AND MATERIALS

Our teaching methods are communicative, contextualized, and experiential, offering many opportunities to develop, practice, and improve your oral and written French skills. We also make every effort to adapt to your learning needs and strategies.

Please bring basic materials (paper, pens). We also recommend bringing a French–English dictionary and *Bescherelle – L'Art de conjuguer*, which will be useful in class and for homework. Our experienced instructors create a positive and stimulating learning environment. Activities include oral exercises, debates, discussions, and educational games, offering a wide variety of learning opportunities both inside and outside the classroom.

Beyond the Classroom

In addition to academic activities, we offer cultural, educational, social, and physical activities. Our communicative approach replaces traditional structured methods to make French learning dynamic and motivating.

ATTENDANCE POLICY

According to the rules of the Impact program, any unjustified absence of three hours or more from class, or two hours or more from a workshop, may result in expulsion from the program. A written justification must be submitted to the Impact program administration.

Absences are permitted only under exceptional circumstances:

- For unforeseen situations (e.g., funerals), you must inform the program administration as soon as possible.
- For planned events (e.g., important family gatherings, provincial or national sports competitions), you must plan with the program administration at least two weeks in advance.

If you need to leave campus due to a family emergency, you must inform the program administration and provide:

- The reason for your departure
- Who you will be leaving with
- Your expected time of return

STAFF

Our *Impact* activity leaders are dynamic, enthusiastic, and passionate about creating a welcoming and stimulating environment. They are:

- Experienced facilitators specializing in cultural, social, and recreational activities
- Fully fluent in French, ensuring smooth communication throughout the program
- Creative and energetic, committed to making your immersion experience fun, interactive, and memorable
- Supportive mentors available to guide you through cultural discovery, language practice, and group activities

They will organize a variety of activities, including cultural outings, social evenings, and recreational activities, all designed to complement your classroom learning and help you practice French in real-life contexts.

SPECIAL NEEDS

You must inform us if you have a significant medical or physical condition (e.g., accessibility needs, celiac disease, anaphylaxis, mental health concerns, etc.) by carefully completing the registration form. A doctor's note may be required to assess your needs.

This information will help us put the necessary measures in place to ensure your safety and adequately meet your specific needs.

Failure to disclose a significant condition requiring specific supervision (e.g., medication management) may result in exclusion from the program, as we will not be able to provide appropriate support if we are not informed.

GENERAL RULES AND REGULATIONS

Given the specific objectives of the program, general rules have been created in order to ensure everyone's safety and well-being. Although our program is designed to be engaging, stimulating and enjoyable, it is also very serious in nature. It is imperative that all rules must be followed by all students who participate in the Impact Program. The program and residence rules will be closely monitored and enforced.

The following rules and regulations will be clearly explained during the first general meeting with students.

- 🚫 Alcoholic beverages, cannabis and non-prescription, illegal drugs are strictly prohibited. Any student caught either in possession or under the influence of alcohol or drugs **will be reported to campus security and the student or students involved will be dismissed from the program immediately**. Furthermore, criminal charges may result from this sort of alcohol or drug offence. Should this situation arise, our protocol is to notify parents immediately and to require that their child be picked up as soon as possible.
- 🚫 **If it is necessary to dismiss a student from the program for any valid reason** (ex: participant engages in a behavior that puts them or others at risk), **parents must arrange to pick up their child immediately upon being informed of their dismissal**. If parents are unable to pick up their child on that same day, alternate arrangements must be made. If a student is sent

home from our program prematurely, their presence will no longer be allowed on campus for the duration of the program.

- ☾ Students have access to many common meeting areas. Access to areas not used for student activities is out of bounds. Facilities that will be used by students during the program are identified on the campus map at the end of the package.
- ☾ **Attending class and participating in workshops is mandatory.** If a student is ill or injured, they must inform a staff member immediately. If a student feels sick at night or feels that they are unable to attend classes that day, the monitor on duty must be informed. The list of monitors on duty will be posted every day on the floor of bulletin boards. Absences are closely monitored by the program administration.
- ☾ All students must respect the curfew. Noise will not be tolerated after 10:00 p.m. during the week in order to respect the fact that most students need rest. Visits to other rooms are strictly prohibited.
- ☾ If medical attention is needed, a member of our team will accompany the student to a hospital outpatient department, or to a medical clinic to be examined by a doctor. A staff member will remain at the hospital or clinic with the student until they are ready to return to the residence. If there is a serious medical problem, the parents will be contacted immediately, and a staff member will remain with the student until parents arrive.
- ☾ Unless there is an emergency, we ask that parents and friends refrain from calling students after 10:00 p.m.
- ☾ Immediate family members are the only people allowed in a student's room. Brothers and sisters must be accompanied by one of their parents. **This applies only on arrival day to help the students settle in their room.** For security reasons and to protect the other minors in the program, no parent, guardian, family member or friend will be allowed to enter the student's room at any other time during the program.
- ☾ Students are required to always carry their ID card.
- ☾ If a student notices any damage to their room, or if something does not work properly, the students must report this to a staff member immediately.
- ☾ When borrowing sports equipment from the reception area, the student will be asked to leave their ID card at the front desk until they return the equipment. The ID card will be returned to them at that time.
- ☾ Students who must leave the program for a valid reason before the end of the program **must** inform the monitors or the Assistant Director. **A meeting with the Assistant Director must take place before the departure. The student will be required to give their ID and borrowed material, as well as their room key to a monitor prior to departure. If not, you risk losing your deposit.**
- ☾ When there is a large group of teenagers living together in a residence, strong discipline must prevail. Each case is dealt with individually and other staff members are consulted prior to asking a student to leave the program. This procedure has been adopted to ensure that personality conflicts do not complicate the situation. It is important to be on time for all classes, activities and workshops.

- 🚲 It is also important to arrive at the cafeteria on time. Footwear and shirts are mandatory in the cafeteria. Any form of disruptive behavior in the cafeteria will not be tolerated.
- 🚲 If a change of roommate is required for a valid reason during the stay, a monitor must be informed as soon as possible. We will assess and rectify the situation, if necessary. Changing rooms is not permitted unless authorized by the program Director.
- 🚲 **Students must stay in their respective rooms and must not visit other rooms. There are common spaces for students to gather.** Room visits are strictly forbidden at any time during the summer camp. Failure to comply with these rules will result in **permanent exclusions with immediate effect.**
- 🚲 Students are asked **not** to congregate in the stairways. We have student lounges for socializing. Fire prevention laws always prohibit the blocking of stairwells.
- 🚲 Students will be held responsible for any damage to the Université de Moncton property.

Past students have expressed that our program is a very enjoyable experience.

These rules are based on common sense, and they are intended to protect the students as well as the reputation of the program. Students who are recipients of a provincial bursary have been granted a privilege, and it is our shared responsibility to ensure that the taxpayer's contribution to their education is spent wisely.

Our staff is experienced and caring, we will be happy to do everything we can to make each participant's experience in our program a positive experience.

RESIDENCE RULES

- 🚲 **Walls:** Please do not attach posters or any objects to the walls using thumbtacks, nails, or adhesive tape that may damage the paint. Any damage to the residence will result in repair costs being deducted from your \$100 deposit.

Reminder: Your deposit will be refunded after the program, no later than September 30, 2026, provided that no damages have been incurred and all borrowed materials (keys, laundry cards, others) are returned in good condition.

- 🚲 **Air conditioners:** No installed air conditioners are permitted. **However, participants can bring a fan.**
- 🚲 **Fire alarms:** It is a criminal offence to misuse fire extinguishers or fire alarms. Students caught doing so will be charged under section 393 of the Criminal Code. Red doors that are clearly marked as «Emergency Exits Only» sound a general alarm at the fire station when opened. They must remain closed or used only in case of an emergency.
- 🚲 **Animals** are not permitted in your room.
- 🚲 **Electrical appliances:** Only the following electrical appliances are permitted in your rooms: electric razors, hair dryers, CD players or radio with headphones, computers and fan.
- 🚲 **Firearms and weapons:** No firearms or weapons of any kind may be kept in your room or on your person.
- 🚲 **Insurance:** The Université de Moncton is not responsible for damage to your child's belongings caused by water, fire or smoke-related incidents.

- 🚲 **Windows:** Students are asked to use the main entrance to the building. Windows are not to be used to enter or leave the building. Anyone using the windows to enter or leave the building will face dismissal. Objects cannot be allowed to be thrown from windows.
- 🚲 **Furniture:** Students must leave the furniture in their original location in the residence. Any exception must be approved by a monitor.
- 🚲 **Special evenings** (parties): Residence halls and rooms are not to be used for parties. All gatherings will be held in the students' lounge or elsewhere on the campus and will be supervised. All of our social and cultural activities are for our students only; no outsiders will be allowed to participate.
- 🚲 **Room assignment:** Residence rooms will be assigned before your arrival; requests for a specific roommate cannot be guaranteed but will be considered.

RULES FOR SUNDAYS

- 🚲 We encourage our students to stay on campus for the duration of the program in order to guarantee the extremely important continuity of the immersion process.
- 🚲 We understand that spending four weeks in residence during the summer vacation can sometimes be challenging for the students. Therefore, students can be allowed off campus on Sundays between the hours of 10:00 a.m. and 7:00 p.m. These participants must have the permission of their parents or legal guardians in order to release the Université de Moncton and its staff from any responsibility while these students are unsupervised by monitors. Parents must give permission in the form that they have to complete when they register their child.
- 🚲 Parents/guardians must specify who will accompany their child during their absence from the campus. This procedure is necessary to ensure the student's safety. Students must also inform a monitor when they leave campus and let the monitor know where they intend to spend the day.
- 🚲 Parents may contact the program Director, to inform them of any justified absences required after registration day. **Parents will receive updated contact information on the registration day.**
- 🚲 Students are required to return to the residence no later than 6:45 p.m. on Sunday night and to let the monitor on duty know that they have returned. We also encourage relatives and friends to visit the University on Sundays. **However, it is forbidden to host visitors in residences.** Friends and relatives must leave no later than 6:45 p.m. as our weekly general meeting is held at 7:00 p.m.
- 🚲 Friends are not allowed to visit during the week as this would interfere with our various activities. Relatives are asked to restrict their visits to Sundays.
- 🚲 If for some unforeseen reason parents must visit during the week, arrangements must be made in advance.
- 🚲 Each absence is considered on an individual basis. If a student must leave the program to attend a previously scheduled event such as a wedding, family reunion, an important sports event, etc., **we must be informed on the day of registration.** We do not allow students to go home on weekends without valid reasons. Of course, these rules do not apply in the event of an emergency.

- ⌘ Please note that there will be a limited number of organized activities offered on Sundays, and services such as the cafeteria will be available. Every Sunday evening, a general meeting is held for all students and staff. The Sunday evening general meeting is the time and place to discuss concerns, problems, coming events, expectations, rules, etc. The students also can express themselves freely at that time concerning any problem or concern that they may have.

We would greatly appreciate parents' full cooperation in avoiding unnecessary absences from the program. As mentioned, it is important for us to be informed of absences at registration for us to be able to monitor the situation closely.

THE FRENCH ONLY RULE

Only French is allowed during your stay at the Impact Program.

Positive reinforcement and a motivational approach are used throughout the four-week camp to encourage that students use the target language to the best of their ability. It is the only way to achieve positive results in an immersion setting, and to attain the program objective of increasing proficiency in the French language. We do understand that it is more difficult for beginners, but we ask the more advanced students to help the less advanced students during the activities, as well as during free time.

Students who speak any other language but French during the program will be given three official warnings, then they will be interviewed by the assistant director, and they may be dismissed from the program. The French only rule applies at all times during your stay at the Université de Moncton.

Note: This policy is strictly reinforced: dismissal from the Program may occur if the policy is not followed. However, the French only policy does not apply to emergency situations, or if a student wishes to discuss a personal problem with a staff member.

PACKAGE DELIVERY PROCESS

Participants can receive packages or mails during the program. The delivery address is:

Name of participant
Name of Residence
18 Avenue Antonine-Maillet
Moncton NB
E1A 3E9

RESPECTFUL AND INCLUSIVE ENVIRONMENT

The Université de Moncton offers a respectful and inclusive environment, and we expect participants to adopt a behaviour in this way along the program.

- All our spaces are safe spaces for all persons, minorities and members of the LGBTQ2S+ community. Our staff is diverse and has had training to offer an inclusive experience for all participants.

- Feel free to let us know what your preferred pronouns are if they differ from what has been submitted in the data form. We will include them on our class lists and do our best to honour them.
- There are non-gendered washrooms in most buildings on campus.
- Finally, the Université de Moncton has a no-perfume policy for indoor spaces (due to allergies). Deodorants and scented soaps are allowed.

FAQ – FREQUENTLY ASKED QUESTIONS

GENERAL

🚲 **Is the Université de Moncton located near stores, boutiques and supermarkets?**

The university and residences are located within a 20-minute walk to a shopping mall and to restaurants, pharmacies and grocery stores.

🚲 **Are travel costs included in the cost of the program?**

Round-trip travel expenses from your place of residence to the Université de Moncton are your responsibility.

REGISTRATION DAY

🚲 **What should I expect on registration day?**

Registration takes place at the Pavillon Léopold-Taillon in the Room "Richelieu" on the University campus. Please find the campus map at the end of this document. Students will obtain their room key and borrowed material and will then have an opportunity to visit the residences. A student gathering will take place for supper, followed by a meeting and various activities in the evening, giving students an opportunity to get acquainted with each other.

🚲 **Are there any special study materials I should acquire before my arrival?**

A French-English dictionary and a verb conjugation book are recommended. Participants must bring pens, pencils, a sharpener and two notebooks.

ACCOMMODATION

🚲 **Where will I be living during my stay at U de M?**

All students in the Impact Program stay at the Médard-Colette residence located on campus. Refer to [Appendix A- Campus Map](#)

🚲 **Can I share a room with another student?**

You will stay in studios equipped with two or three bedrooms and one shared bathroom. Some rooms could be shared. We combine participants of the same gender and of similar age.

🚲 **Is there a telephone in the room?**

There are no direct line telephones in the residence rooms. If you wish to contact your child, please use the telephone number provided at the end of this document or contact housing services at (506) 858-4000 (ext. 4015).

🚲 **Are Interac machines available?**

There are two ATMs on campus (National Bank and UNI), and they are located at the Student Center.

PERSONAL ITEMS

🚲 **Can I buy personal items if I forget something?**

Students may purchase personal items at the shopping mall or nearby store during an organized outing or on Sundays if they are allowed to leave the campus.

VISITS, DAYS OFF AND DEPARTURE

🚲 **Since Sunday is a day off, will I be unsupervised?**

If you stay on campus, you will remain under the care of a monitor. Parents must give a permission to leave the campus without supervision.

🚲 **Can my parents visit me during my stay at the Université?**

Because of planned evening activities, it will be very difficult to organize visits with parents on weekdays. Saturday will also be a full day of activities. Sunday is the best day for a visit.

STAFF AND CONTACT INFORMATION

Laetitia Augustine

Languages and Culture Manager
Formation Continue
Université de Moncton

Nina Richard

Languages and Culture Project Coordinator
Formation Continue
Université de Moncton

Please contact us by using the following email address: impact@umoncton.ca

ONLY DURING THE PROGRAM:

(Specific contact information will be updated and communicated in June when the team is on duty)

Position currently being filled

Program Director
Impact
Formation Continue
Université de Moncton

Appendix A

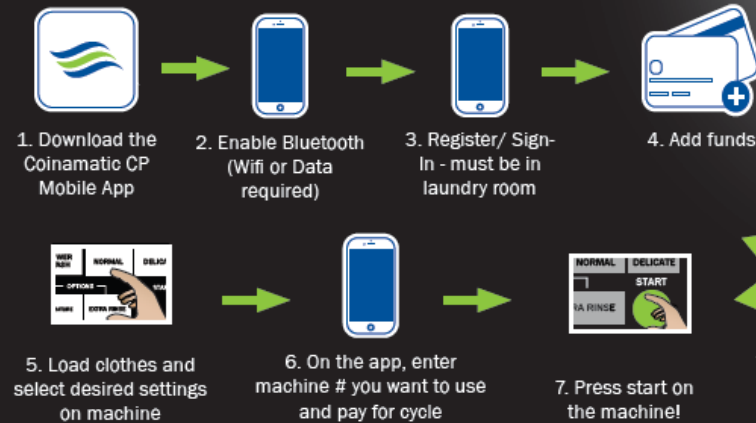


Appendix B

YOU CAN NOW PAY FOR LAUNDRY WITH YOUR PHONE!

Coinamatic has a mobile app! No more cards, no more coins, no more hassle!

HOW IT WORKS



Coinamatic CP Mobile

Download the Coinamatic CP Mobile APP Today!



FEEDBACK FROM APP USERS

"I love it because it is so convenient. I don't have to worry about having my laundry card with me and I can reduce touch points. I feel safer."
Joy - Calgary

"I love the app. I love all the features and it really makes doing laundry a lot easier!"
Barb G - Toronto

