

EXPLORE 13-15

FRENCH IMMERSION SUMMER PROGRAM

JULY 27 TO AUGUST 14, 2026



INFORMATION PACKAGE

SUMMER 2026



UNIVERSITÉ DE MONCTON
EDMUNDSTON MONCTON SHIPPAGAN

Formation continue

TABLE OF CONTENTS

We ask you to read the entire document. For quick referral, you can click on the section you wish to consult.

TABLE OF CONTENTS	2
REGISTRATION DAY	4
TRAVEL ARRANGEMENTS AND TRANSPORTATION FROM THE AIRPORT OR TRAIN STATION TO THE UNIVERSITY ..	4
DEPARTURE	5
LODGING	5
WHAT TO BRING WITH YOU	6
LAUNDRY	7
SPORT FACILITIES	8
MEALS	8
PLACEMENT TEST AND CLASS LEVEL	8
TEACHING APPROACH AND MATERIALS	9
ATTENDANCE POLICY	9
STAFF	9
INSURANCE AND HEALTH	10
TYPICAL DAILY SCHEDULE	10
WORKSHOPS AND ACTIVITIES	11
WEEKEND LEAVES	11
CELL PHONES	11
LAPTOP COMPUTERS AND WIRELESS ACCESS	11
PROGRAM REGULATION AND RULES	12
RESIDENCE RULES	13
LANGUAGE IMMERSION POLICY	14
PROGRAM DURATION AND SCHEDULE	14
PACKAGES DELIVERY PROCESS	15
RESPECTFUL AND INCLUSIVE ENVIRONMENT	15
DEPOSIT POLICY	15
DEPARTURE	15
INFORMATION VIRTUAL SESSION	16
FAQs	16
STAFF AND CONTACT INFORMATION	17
APPENDIX	18

Dear Participant:

We, at the **Université de Moncton**, are pleased to welcome you as a student in our 2026 Explore 13-15 French Immersion Summer Program, taking place **from July 27 to August 14**. We are happy that you have chosen to spend three weeks of immersion in the French language and culture at our institution. We sincerely hope that your stay with us will be a memorable experience. Our staff is committed to making your immersion experience fun and rewarding.

We are confident that this summer's prospective students are as eager as we are to make this program as successful as it has been in the past.

This information package is designed to help you prepare for your trip. It contains the key details you need to travel with confidence and make the most of your stay. If you require additional information not included here, please feel free to email us explore13-15@umoncton.ca.

In May, you will be invited to participate in a virtual information session, which will conclude with a Q&A period. You may ask questions whose answers are not included in this document.

We look forward to meeting you on **registration day**, on **Sunday July 26** !

Best regards,

Lynne M. LeBlanc

Interim Executive Director
Formation Continue
Université de Moncton

Laetitia Augustine

Languages and Culture Manager
Formation Continue
Université de Moncton

Nina Richard

Program Coordinator
Formation Continue
Université de Moncton

Position currently being filled

Explore 13-15 Program Director
French Immersion Summer Program
Formation Continue
Université de Moncton

REGISTRATION DAY

When? Sunday, July 26th, 2026 from 10:00 a.m. to 4:00 p.m.

If you arrive after 4 p.m. you will need to pick up your room key at Security Office situated in the Résidence Lefebvre in room 001, 15 rue Saint-Croix (the access is just behind Résidence Lefebvre). The team members will pick you up there.

Where? Université de Moncton, Pavillon Léopold-Taillon, room Richelieu, 18 Av. Antonine Maillet, Moncton. See interactive campus map here: www.umoncton.ca/umcm-visiteguidee/ or see [appendix A](#) (map of campus). This is a mandatory first stop on arrival to pick up your room key. You will then be directed to the Résidence Lefebvre or Résidence Médard Colette, about 300 meters away.

During registration, you will have the opportunity to meet the program staff who will answer any question you may have. You will also receive an identification card that must be carried with you at all times. This card identifies you as a student in the Explore 13-15 French Immersion Summer Program and allows you access campus facilities.

A student gathering will take place on registration day at 7:00 pm. This first weekly general information meeting will give you an opportunity to get informed about the program regulations and to get acquainted with other students and the program staff.

TRAVEL ARRANGEMENTS AND TRANSPORTATION FROM THE AIRPORT OR TRAIN STATION TO THE UNIVERSITY

It is mandatory that you inform us of your travel itinerary and any changes thereof by filling the form : [Explore 13-15 Participant Travel Information - 2026 – Remplir le formulaire](#). This information allows us to welcome participant in the best conditions.

If you travel by plane or by train or bus:

- As long as you've submitted your travel details, one of the program councillors will be at the airport or train and bus station to welcome participants. The airport and the station are small. Participants can't miss our staff that will wear a special T-shirt!
- A process is in place to ensure that participants have arrived safely on campus. Our staff will instruct participants and their cab on their destination for check-in or registration (depending on the time arrival). They will note the cab number and notify staff on campus that participant is about to arrive.
- The trip between the airport or station and the campus will be by cab. The cab fares are your responsibility. Participants must budget about 20\$ to 25\$ from airport and 10\$ to 15\$ from station. The cab fares may be split among participants sharing a cab, should their arrival time be close enough to permit this.
- The University is located 10 minutes from the airport and 5 minutes from the train station.

If you choose to make your way to the campus on your own, please follow the guidelines listed above in the "Registration Day" section.

If you arrive after 4:00 p.m. on Sunday, July 26, 2026, please inform us by filling the travel form online above.

If you or your child would like to travel with other participants living in your area, you can join our private Facebook group to connect with other participants. This will allow you to organize your trip privately afterwards. The process to join this group will be sent once your registration is completed, and the group will be online in June.

Special discount on VIA Rail Train Tickets

As a participant in the Explore program, you are eligible for a 7.5% discount on VIA Rail train tickets (excluding Economy Escape fare, Prestige Sleeper Class, and Prestige Class). This discount can be extended to up to three additional passengers traveling with you.

To access this discount, you must create a VIA Rail profile and enter the corporate code 810706 under the "Corporate Code" section at viarail.ca. Alternatively, you can provide this code when booking by phone at 1-888-VIA-RAIL (842-7245) or at a VIA Rail ticket counter.

You may be required to present a letter from the CMEC Secretariat confirming your name and the discount code when collecting your ticket or during ticket inspection. Without this letter, you may be charged the full fare. Please send us an email to: explore13-15@umoncton.ca to obtain the required document.

DEPARTURE

As for travel arrangements for your departure at the end of the program, please **plan to leave on Friday August 14, 2026.**

Participants will be required to leave their residence room on Friday, August 14th, 2026 in the morning. There will be a room designated to store your luggage on the main floor until their departure to the airport or train/bus station if needed.

Our team will accompany the participants to the airport or to the train/bus station according to the departure times. The trip between the campus and the airport or train/bus station will be by cab. The cab fares are your responsibility. Participants must budget about 20\$ to 25\$ to airport and 10\$ to 15\$ to station. The cab fares will be shared between participants who take the same cab.

Please remember to inform us of your travel itinerary and any changes thereof by filling the [Explore 13-15 Participant Travel Information - 2026 – Remplir le formulaire](#), so, our staff can assist the participants.

LODGING

Explore 13-15 participants will be housed in the **Médard-Colette and in Lefebvre residences** on the campus. Upon registration, you will have the opportunity to visit your residence and to obtain the residence keys. You will be given time to unpack and settle in before the start of the evening activity. You can view the rooms on our website here: [Room overview](#). Our residences are co-ed for Explore students. All rooms are single occupancy and equipped with a high-speed wireless Internet connection. If you do not have a mobile phone, please be informed that there are no direct line telephones in the residence rooms. Parents or family members wishing

to get in contact you will need to contact the housing services at (506) 858-4015. See [appendix A](#) to locate buildings.

The residences offer three-bedroom studios and a shared bathroom. The participant will occupy a single room located in a shares studio with two other Explore participants. We combine participants of the same sex and of similar age.

Dorm rooms **include**:

- pillows, sheets and towels, which are regularly replaced by housekeeping,

Dorm rooms **do not include**:

- dishes or cutlery,
- soap, shampoo.
- air conditioning, fan.

A shared fridge and a shared microwave are located on each level of the residences.

There are two ATMs on campus. They are located in the student center.

WHAT TO BRING WITH YOU

Essential Items

- ✓ Health insurance card (Canadian residents)
- ✓ Proof of health insurance and a copy of your birth certificate (non-residents)
- ✓ Pocket money and credit/debit card. We recommend having a backup solution in case of loss.
- ✓ French-English Dictionary (recommended - You may buy one at Librairie Acadienne located on campus))
- ✓ Bescherelle - l'Art de conjuguer (recommended)
- ✓ Pens, pencils, Sharpener, 2 notebooks
- ✓ Bathing suit, bathing cap, sandals and beach towel (for the beach or CEPS sports complex swimming pool)
- ✓ Sportswear (running and/or walking shoes for various activities)
- ✓ Sunscreen
- ✓ Medications (Nonprescription medication ie: Tylenol, Claritin Allergies or prescription medication)
- ✓ Soap, shampoo, toothbrush and toothpaste
- ✓ Alarm clock
- ✓ Outdoor clothing
- ✓ Warm clothing in case the weather changes

- ✓ Towels and face cloths
- ✓ Laundry detergent
- ✓ microwaveable bowl, cup and plate if needed (reminder : breakfast, lunch and supper are included)
- ✓ Flashlight

Optional Items

- ✓ Reusable water bottle
- ✓ Small backpack for day trips
- ✓ Hair dryer
- ✓ Camera
- ✓ Umbrella and rainwear
- ✓ Appropriate clothing for the banquet at the end of the program
- ✓ Musical instrument (if you play one)
- ✓ Fan, ice pack (there is no air-conditioning in the residences, and it gets hot in the Summer!)

PLEASE NOTE:

Feel free to bring whatever article you may need but remember that the Program lasts only three weeks and you will have access to laundry facilities. The Université de Moncton is not responsible for the loss or theft of personal belongings. Therefore, it is imperative that you look after your personal effects, and that you keep your door locked at all times. **We recommend that you label your personal items, camera and cell phone.**

LAUNDRY

You are welcome to bring any personal items you may need; however, please keep in mind that the program lasts only three **weeks** and laundry facilities are available on site.

- **Bedding:** Sheets, blankets, and pillows are provided by the housing service.
- **Laundry Facilities:** Residences are equipped with washers and dryers. The cost is **\$2 per use for each machine**.
- **Laundry Card:** Participants receive a laundry card on the first day of the program. This card can be recharged at the Student Center (see Appendix A).
- **Coinomatic App:** You can also download the **Coinomatic app** on your phone (see Appendix B) to load funds remotely. To register, you must be in the laundry room. Simply scan the QR code on the machine, and the amount will be debited directly from the app.

Tip: Using the app allows you to add funds without visiting the Student Center. **See Appendix B.**

SPORT FACILITIES

The Université de Moncton campus offers a variety of sports facilities. For more details, visit: [CEPS Louis-J.-Robichaud](#)

Important :

- Access to CEPS facilities is subject to a fee, payable by the participant.
- Facilities may be used **at your own risk** and **only during your free time**, as no supervision will be provided by our staff.

MEALS

Participants get 3 meals per day: breakfast, lunch and dinner, available at the campus restaurant "Le Bistro 63" located in the student center building. There will be a wide selection of healthy and balanced choices available every day.

During field trips, packed lunches are prepared by the campus restaurant staff and sent with the group.

You will be asked to report any allergies or dietary restrictions when completing the registration form. We will share this information with our food services.

More information about the on-campus cafeteria menus, a list of local restaurants within walking distance of the campus, and local grocery stores will be provided by the staff of the program.

PLACEMENT TEST AND CLASS LEVEL

The placement test will be administered through our online platform. Each participant will receive an email with login details to create an account. This account will allow you to complete the online test and access several resources to support your language learning journey.

Important: The online proficiency test must be completed **before your arrival on campus**. The oral component of the test will take place on campus with our teaching team on the first day of the program.

Based on the results, participants will be placed in classes according to their proficiency level. We strive to keep classes as homogeneous as possible. Our four levels of French proficiency follow the Common European Framework of Reference for Languages (CEFR):

- Beginner (A1)
- Elementary (A2)
- Intermediate (B1)
- Advanced (B2)

Our courses align with CEFR standards and cover the main language skills for each level. To get the most out of the program, participants are expected to complete required coursework and study in addition to regular classroom time.

TEACHING APPROACH AND MATERIALS

Our teaching methods are communicative, contextual, and experiential, offering numerous opportunities to develop, practice, and improve oral and written skills in French. We also make every effort to accommodate individual learning needs and strategies.

Please bring basic materials such as writing paper and pens. We also recommend bringing a French-English dictionary and *Bescherelle – L'Art de conjuguer*, as these tools will be helpful during classes and homework.

Our experienced professors create a positive and stimulating learning environment. Activities include oral exercises, debates, discussions, and educational games, providing a wide variety of learning opportunities both inside and outside the classroom.

Beyond the Classroom

In addition to academic activities, we offer cultural, pedagogical, social, and physical activities. Our communicative approach replaces traditional structured methods, ensuring that learning French is dynamic and engaging.

ATTENDANCE POLICY

According to the Explore program regulations, any **unexplained absence of three or more hours of class**, or **two or more hours from a workshop**, may result in expulsion from the program. A written justification for any absence must be submitted to the Explore Program Director.

Absences are permitted only under **special circumstances**.

- For unforeseen situations such as funerals, students must inform the Program Director **as soon as possible**.
- For planned events such as important family gatherings or participation in provincial or national sporting events, arrangements must be made with the Director **at least two weeks in advance**.

If a student needs to leave campus due to an urgent family matter, they must notify the Program Director and provide details including:

- The reason for departure
- With whom they will be leaving
- The expected time of return

STAFF

Our Explore 13-15 activity leaders are dynamic, enthusiastic, and passionate about creating a welcoming and engaging environment for all participants. They are:

- **Experienced facilitators** who specialize in cultural, social, and recreational activities.
- **Fluent in French**, ensuring smooth communication and support throughout the program.
- **Creative and energetic**, committed to making your immersion experience fun, interactive, and memorable.
- **Supportive mentors**, ready to guide you through cultural discovery, language practice, and community-building activities.

They will organize a variety of events, including cultural outings, social evenings, and recreational activities, all designed to complement your classroom learning and help you practice French in real-life contexts.

INSURANCE AND HEALTH

Canadian students from outside New-Brunswick should bring their provincial health insurance card. We also recommend that you obtain information regarding health care for when you are out of your own province.

Foreign students must be protected by a personal health insurance policy. Proof of health insurance is required with the registration forms.

Special needs

Participants must inform us if they have important medical or physical condition(s) (ex: accessibility, celiac disease, anaphylaxis, mental health...) by completed correctly and as accurately as possible the registration form. A Doctor's note or Medical Certificate may be required to evaluate your needs.

This information will allow us to take the necessary measures to make the participant's stay safe and adapted to these special needs.

Not disclosing an important medical or physical condition that requires specific supervision (e.g. medication control, etc.) may constitute grounds for dismissal from the program. Indeed, we will not be able to welcome you the best we can if we are not made aware of how we can help.

TYPICAL DAILY SCHEDULE

8:15 am to 10:15 am	Class time
10:15 am to 10:30 am	Break
10:30 am to 12:00 pm	Class time
12:00 pm to 1:15 pm	Lunch
1:15 pm to 3:15 pm	Workshop or Activities
3:15 pm to 6:00 pm	Free time and Supper
6:00 pm to 8:30 pm	Variety of workshops, cultural, athletic activities study, free time
8:30 pm until bedtime	Free time and Study time

NOTE: Staff may modify the daily schedule, if needed.

WORKSHOPS AND ACTIVITIES



During our summer program, several educational activities will be offered. A few outings to tourist attractions in Moncton and its vicinity will take place during the three weeks of the Explore 13-15 program (Parlee Beach, Hopewell Rock, Akadi Lumina and more).

PLEASE NOTE:

All afternoon workshops are **mandatory for Explore 13-15 French Immersion Summer Program students**. It is a fantastic opportunity to practice the French language and be exposed to the French culture outside the classroom. It is an integral part of the bursary you have accepted.

WEEKEND LEAVES

In order to ensure continuity, students **must** stay on campus each and every single weekend for the duration of the program. **Bursary students are not allowed to go home on weekends or during the week. (These are directives that must be enforced, as they are guidelines for the bursary program and an integral part of the total immersion learning experience).**

Some activities are organized on Saturdays and students **must** attend them. Only Sundays are free time.

Absence from the program is limited to special circumstances. For unforeseen situations such as funerals, students must inform the Program Director as soon as possible. For other events such as important family reunions, participation in provincial or national sporting events, etc., arrangements must be made with the Director at least **two weeks in advance**.

If a student must leave the campus at any time because of an urgent family matter, he or she must inform the Program Director or the Assistant Program Director of their departure, with whom they will be leaving, as well as the time of his or her return.

CELL PHONES

Cell phones, texting and other communication applications may not be used during courses, workshops or organized activities. However, you may use your cell phone's camera during a program activity.

LAPTOP COMPUTERS AND WIRELESS ACCESS

Feel free to bring your laptop computer with you. WI-FI service (wireless access) is available free of charge everywhere on campus. However, please take note of the following:

- The Université de Moncton is not responsible for damage caused to the personal property of its tenants. Accordingly, it is strongly recommended that students acquire insurance coverage for their personal belongings."
- The Université de Moncton is not responsible for lost or stolen personal belongings. Your door must be kept locked at all times.

Wi-Fi Access

Each participant will have access to campus Wi-Fi either through:

- A **secure connection** using the UMoncton account and email address created for them

shortly before arrival, or

- The **visitor Wi-Fi network (umcm-visiteur)**.

In addition, Wi-Fi will be available in each accommodation via a modem. Below are the steps to connect to the network in your accommodation.

PROGRAM REGULATION AND RULES

The regulations below ensure the protection of participants and the smooth running of the program.

Thank you for respecting them.

- Being a participant or participant in a program offered by the Université de Moncton, **you must respect the rules and policies** established by the University.
- **Alcoholic beverages, cigarettes, vapes and cannabis are prohibited during program activities and also in residences.** Non-prescription illegal drugs are prohibited at all times. Anyone in possession of or under the influence of illegal drugs will be expelled.
- If it becomes necessary to dismiss a student from the program for any valid reason (ex: participant engages in a behavior that puts them or others at risk), the student must leave the campus immediately after travel arrangements have been made. The student will no longer be allowed on campus.
- Any student whose general behavior or attitude is judged to be detrimental to the others will be dismissed.
- Participants will not be allowed to return home and visit relatives or friends in the evening or on weekends.
- **Participants must always speak French during their stay in the program.** Any participant who does not demonstrate an effort to speak French could be expelled.
- **Attendance in class and participation in afternoon workshops is mandatory** for all students and will be closely monitored by the administration. An absence to any of the activities will need to be justified and will be reported to the administration. If a student is ill or injured, he or she must inform a staff member of the incident for immediate attention. If you feel sick at night, or you feel that you cannot attend classes that day, you must inform the staff member on duty on your floor whose name will be posted every day.
- Students are required to **carry their ID card at all times.** This card will be given to you during registration.
- If you notice any damage to your room or if something does not work as it should, you are asked to **report** it to a staff member immediately.
- If a student deliberately damages any property of the Université de Moncton, he or she will be **held responsible for his or her actions and any cost associated with the damages.**
- Students who must leave before the end of the program must inform the Program Director prior to their departure. They must leave their nametag and keys at our customer service. Any keys taken home must be returned by mail.

- It is important to arrive in class, at activities as well as workshops, or any social or cultural events **on time**.
- **Participants are responsible for their residence room.** Rooms must be kept clean and tidy. Participants must also abide by the residence rules and regulations.
- Our staff is experienced and caring. We are more than happy to do our best to make your participation in our program a very positive experience. If at any time during your stay you encounter a problem of any kind, please do not hesitate to speak with a member of our staff. We are all here to help and to make your stay as pleasant as possible.
- All activities which require bus transportation will be provided by the program. Any other form of transportation will not be permitted.
- If it becomes necessary to dismiss a student from the program for any valid reason (e.g., behavior that puts themselves or others at risk), **the student will be required to leave campus (within 24 hours) of their parents or guardians being notified.** Parents or guardians must make travel arrangements promptly. We strongly recommend purchasing transportation tickets that can be easily modified.
- **Any student whose general behavior or attitude is judged to be detrimental to others will be sent home.** Any fees incurred for the participant's return to their residence are the responsibility of the parents.
- Students who must leave before the end of the program must inform the Program Director prior to their departure. They must leave their ID card and keys at our customer service. Any keys taken home must be returned by mail.
- Participants must abide by the cafeteria rules and regulation in the cafeteria, including wearing shoes, shirt and an acceptable attire.

RESIDENCE RULES

Students of the Explore 13-15 program will stay at the Medard-Collette and Lefebvre buildings. They must respect the following residence rules:

- Animals: It is forbidden to keep an animal in your room.
- Electrical appliances: Only the following electrical appliances are permitted in your rooms: electric razors, hair dryers, CD players or radio with headphones, computers and fan.
- **Installed air conditioners are not permitted. However, participants can bring a fan.**
- Firearms and weapons: No firearms or weapons of any kind can be kept in your room or on your person.
- The Université de Moncton is not liable for damage to the personal property of tenants. Participants are therefore advised to ensure that the door to their room is always locked.
- **You are not permitted to take dishes or utensils out of the cafeteria.**
- It is forbidden to host visitors in residences.

- **A curfew will be held at 10:00 pm every evening, except for certain activities.** Instructors will remain in residence with the participants. A security guard will tour regularly inside and outside the residences according to the schedule established by the Université de Moncton campus security service.
- **Windows:** is not allowed to let objects fall from open windows. Windows are not to be used to enter or leave the building. Students are asked to use the main entrance to the building.
- **Walls:** Please do not attach posters or any objects to the walls using thumbtacks, nails, or adhesive tape that may damage the paint. Any damage to the residence will result in repair costs being deducted from your \$150 deposit.
- **Reminder:** Your deposit will be refunded after the program, no later than September 30, 2026, provided that no damages have been incurred and all borrowed materials (keys, laundry cards, others) are returned in good condition.
- **Special evenings (parties):** Residence halls and rooms are not to be used for parties. Any gathering will be held in the students' lounge or reserved areas in other buildings on the campus.

LANGUAGE IMMERSION POLICY

The main objective of our **Explore French Immersion Summer Program** is to provide students with a fully francophone environment, giving them the opportunity to deepen their knowledge of the French language and to discover francophone culture.

To accelerate learning for all participants, **French is the only language permitted throughout the program.** We understand that this may be challenging for beginners, which is why we encourage more fluent students to collaborate and support those who are less advanced during activities.

If you do not know a word or expression in French, you may use a single word or phrase in another language to clarify your meaning. Our staff will always do their best to assist you.

This policy is strictly enforced: **failure to comply may result in dismissal from the program.**

Exceptions apply in cases of emergency or when a student wishes to discuss a personal matter with a staff member.

PROGRAM DURATION AND SCHEDULE

The Explore French Immersion Summer Program runs for three weeks. During this time, students will attend **3 hours and 30 minutes of classes each day**, Monday through Friday. In addition, participants will take part in a minimum of **3 hours per day of workshops and/or sociocultural activities**, including Saturdays, as outlined in the *Workshops and Activities* section of this information package.

Except for the exceptional situations mentioned earlier, **all transportation for program activities after your arrival will be covered by the program.**

Every effort will be made to ensure that your stay at the Université de Moncton is both pleasant and memorable. Our team provides a supportive, enriching, and enjoyable experience

throughout your immersion journey. Every measure will be put in place to ensure that your stay at the Université de Moncton will be a pleasant and memorable experience.

PACKAGES DELIVERY PROCESS

Participants can receive packages or mail during the program. The delivery address is:

Name of participant
Name of Résidence
 18 Avenue Antonine-Maillet
 Moncton, NB
 E1A 3E9

RESPECTFUL AND INCLUSIVE ENVIRONMENT

The Université de Moncton is committed to providing a respectful and inclusive environment, and we expect all participants to behave accordingly throughout the program. All our spaces are safe spaces for everyone, including minorities and members of the LGBTQ2S+ community. Our staff is diverse and has received training to ensure an inclusive experience for all participants.

Pronouns

If your preferred pronouns differ from those submitted in your registration form, please let us know. We will update our class lists and make every effort to respect your preferences.

Facilities

Non-gendered washrooms are available in most campus buildings. Please refer to [Appendix A](#) for details.

Fragrance Policy

The Université de Moncton has a no-perfume policy for indoor spaces to accommodate individuals with allergies. Deodorants and lightly scented soaps are permitted.

DEPOSIT POLICY

Deposit

Upon registration, a **\$150 deposit** is required. This amount will be refunded at the end of the program **provided that:**

- No damage has occurred, and
- The room keys and laundry card issued at the start of the program are returned upon departure.

We maintain a logbook where each participant must sign when receiving their room keys and laundry card, and again when returning them at the end of the program.

Replacement Costs for Unreturned Items:

- Room keys: **\$120**
- Laundry card: **\$10**

Important: All deposits will be refunded **no later than September 30, 2026**.

DEPARTURE

As for travel arrangements for your departure at the end of the program, please **plan to leave**

on Friday August 14, 2026. Participants will be required to leave their residence room by 11 a.m. There will be a room designated to store your luggage on the main floor until their departure to the airport or train/bus station if needed.

To leave the campus at the end of the program, you may take a cab to the airport, train station or bus station. The cab fares are your responsibility. Participants must budget about 20\$ to 25\$ to get to the airport and 10\$ to 15\$ to get to the station.

INFORMATION VIRTUAL SESSION

You will be invited to a virtual information session during the month of May 2026. We will present the specific features of the program as well as the arrival arrangements. You will also have the opportunity to ask questions. Please note that we will only answer questions that are not addressed in this information package.

FAQs

- **Where will I be accommodated during the program?**
You will stay at Médard-Colette or Lefebvre residences and enjoy a private room.
- **Are the rooms single or shared?**
All rooms are single.
- **Is there air conditioning in the residences?**
No, the residences are not air-conditioned. We recommend bringing a fan or something to help you stay cool, as temperatures can get warm.
- **Can I have visitors in my room?**
No visitors are allowed in your room during the program. However, on arrival day, one person may assist you with settling in. There are plenty of common areas in the residence where you can meet and socialize with other participants.
- **What should I do if something is broken in my room?**
If something is damaged or not working, notify the program staff immediately. They will contact maintenance for repairs. Please note that any unreported damage or intentional harm may result in repair costs being deducted from your deposit, and serious cases could lead to formal complaints.
- **Where will I eat my meals?**
You will have three daily meals at “Le 63” restaurant on campus. During outings, meals will be provided as take-away options.
- **Are meals included in the program?**
Yes, all meals are included from dinner on Sunday, July 26, through breakfast on Friday, June 26. **Please note that lunch on July 26 and August 14 is not provided.**
- **How are allergies or dietary restrictions handled?**
Your health and safety are our priority. All allergies, intolerances, and special requirements indicated on your registration form will be reviewed and communicated to the kitchen team at Le 63. Suitable alternatives will be provided. Program staff are also informed to ensure proper measures are taken at all times.
- **Can I bring my bike on campus?**
Bringing a bike or scooter is not prohibited, but it is not recommended. They are not allowed inside the residences, and we advise against leaving them outside.

- **Do I need to bring money?**
The program covers all activities, outings, classes, accommodation, and meals at Le 63. However, we suggest bringing a payment method for any personal purchases.
- **Where are the stores for shopping located?**
There are no stores on campus, but major retailers such as Walmart and Sobeys are about a 25-minute walk away.
- **Are the bathrooms shared?**
Yes, in Médard Colette and Lefevbre residences the bathroom and toilets are shared. The bathrooms and toilets are separated by gender.
- **Is there a kitchen in the residence for cooking?**
No, there is no kitchen for cooking. However, the residence is equipped with shared refrigerators and microwaves.

STAFF AND CONTACT INFORMATION

Laetitia Augustine

Languages and Culture Manager
Formation Continue
Université de Moncton

Nina Richard

Languages and Culture Coordinator
Formation Continue
Université de Moncton

Please contact us by using the following email address: explore13-15@umoncton.ca

Position currently being filled

Program Director
Explore French Immersion Summer Program
Formation Continue
Université de Moncton

ONLY DURING THE PROGRAM: *Specific contact information will be updated and communicated on July 25th when the team is on duty.*

APPENDIX

Appendix A :



Pavillon J.-Raymond-Frenette : 144

Pavillon Jeanne-de-Valois : A-131, B-043-2, B-215

Faculté d'ingénierie : 111 G1

Pavillon Jacqueline-Bouchard : 125, 126, 058

Pavillon Jean-Cadieux : Cafétéria, 091, 093

Bibliothèque Champlain : 161

Pavillon Adrien-J.-Cormier : 208-6 , 208-7

Pavillon Rémi-Rossignol : C-201, C-203

Ceps Louis-J.-Robichaud : **Aucune**, (vestiaires disponibles)

Arts et beaux-arts: **Aucune**

Centre étudiant : FÉECUM, Le 63, Services de santé, Radio

Pavillon Léopold-Taillon : 521, 409

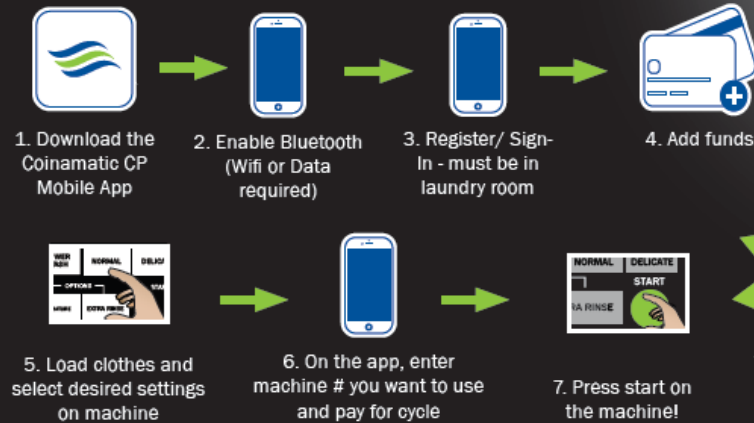


Appendix B

YOU CAN NOW PAY FOR LAUNDRY WITH YOUR PHONE!

Coinamatic has a mobile app! No more cards, no more coins, no more hassle!

HOW IT WORKS



Download the Coinamatic CP Mobile APP Today!



FEEDBACK FROM APP USERS

"I love it because it is so convenient. I don't have to worry about having my laundry card with me and I can reduce touch points. I feel safer."
Joy - Calgary

"I love the app. I love all the features and it really makes doing laundry a lot easier!"

Barb G - Toronto

